



astex®

CATALOGUE 23

Television | Audio | Navigation | Wi-Fi

Designed for your
Mobile Life

23

astex[®]

CATALOGUE23

Television | Audio | Navigation | Wi-Fi

Avtex Televisions

Avtex televisions are designed from conception for the outdoor leisure industry and specified to operate on 12/24v DC as well as mains AC voltage. The highest specifications are implemented for all Avtex products to incorporate all the very latest technology whilst always ensuring uncomplicated operation to the end user

Television range summary

Smart TV Series –

Fully smart TV with integrated Freesat decoder providing a full EPG on satellite and terrestrial TV platforms with Bluetooth and voice control. Designed and built specifically for the mobile leisure industry this range offers the SVoDs (Subscription Video on Demand) we now like to enjoy at home like Netflix, Amazon, Disney+. This series is the most sophisticated mobile leisure vehicle TV available today. SVoDs are paid for services – (Internet connection required to access video on demand services)

PRO TV-DVD-PVR –

The popular PRO range has all of the quality expected from an Avtex TV with the added benefits of integral DVD player and the unique flexibility of recording one side whilst watching another on any platform digital TV or satellite. You can even watch DVD and record live TV simultaneously (without the need for Wi-Fi)

HD TV TRS Series –

The HD TV series is built for discerning customers looking for the quality build of an Avtex TV without the fuss of too many features. All core features are still present in this range such as Avtex One Button Tuning, on-screen battery meter, superior viewing angle screens, instant record, and satellite tuner (No Wi-Fi required)

Designed for your
Mobile Life

Welcome to CATALOGUE23

Experience

Avtex has been the trusted name for mobile leisure specific audio visual products for over 30 years. Our skilled, dedicated team design our TVs and other associated products specifically for the mobile leisure industry. Over the years we have accumulated a wealth of experience and technical expertise in this narrow sector and have an in-depth understanding of the market and its intricate requirements. Sleek design, high quality componentry, rigorous testing, state of the art technology and cutting edge features are the hallmark of Avtex products.

Avtex products are approved and installed by many leading leisure vehicle manufacturers throughout the world.

Support

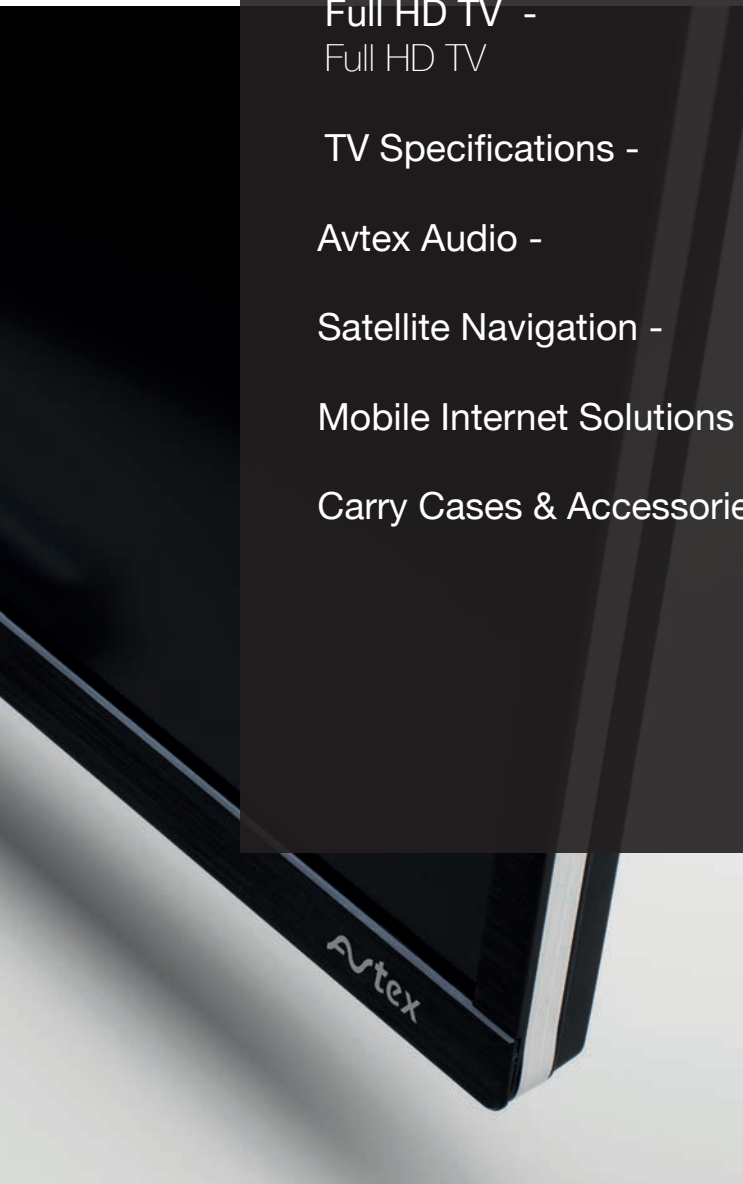
Although there are many electrical products available that are loosely stated as suitable for caravan and motorhome use this does not necessarily mean that they were specifically designed for this marketplace. All products supplied by Avtex carry a comprehensive warranty and it is this uncompromising commitment to our high level of after-sales service which has a direct bearing on the products we supply. You can rest assured that any product originating from Avtex has undergone stringent in-house testing by our technical department to evaluate the product's suitability for this unique environment as well as conforming to strict levels of build quality and long term reliability.

WHY COMPROMISE?



Contents

Smart Series - Smart Full HD TV	4 - 11
PRO Series - TV-DVD Combi	12 - 15
Full HD TV - Full HD TV	16 - 18
TV Specifications -	19 - 20
Avtex Audio -	21 - 22
Satellite Navigation -	25 - 31
Mobile Internet Solutions -	32 - 34
Carry Cases & Accessories -	35 - 39



Why Compromise?

Avtex televisions are designed from conception for the outdoor leisure industry. Built to the highest specification with market specific features making them suitable for the environment they are used in.

Wide Viewing Angles

Avtex TVs have super wide viewing angles and can be mounted and viewed from almost any position providing the whole family with a great view at the same time, wherever they're positioned.

Full HD Panels

Avtex TVs are built with the highest quality Full HD screens producing stunning, clear, and crisp images you would expect from a high-quality TV.

Aluminium Surround



Isolating Switch

Surprisingly, many TVs don't have an isolation switch and just switch to standby via the power button on the remote. All Avtex TVs have a fully isolating ON/OFF switch that isolates the TV from the power source preventing battery drain when not in use.

Removable Aluminium Stand

Avtex TVs have a removeable tabletop stands so they can be wall mounted if required.

Edge to Edge Design

Avtex's contemporary sleek edge to edge design uses an ultra slim polished aluminium surround to provide light weight rigidity and protection resulting in maximum viewing screen size with minimum frame dimensions.

NEW

SMART TV SERIES

Full HD Smart TV

The new Avtex fully loaded battery/mains Smart TVs are bristling with features and content. Connect your TV to the internet and discover a whole new world of entertainment from premium streaming services such as **Netflix, Amazon Prime, Now TV, Sky Store, Disney+, YouTube, ITVX, Apple TV, BBC iPlayer and much more!**

*Some services may require subscription (sold separately)



Avtex

New Range, New Features

The Avtex Smart Range is built to the high standard Avtex customers expect and love but with lots of new and exciting features. As well as streaming your favourite apps you can now cast, connect via bluetooth and much more!



Screen Share Technology

Share all those important memories by casting photos, videos and more directly from your Android or iOS device onto your Avtex television.

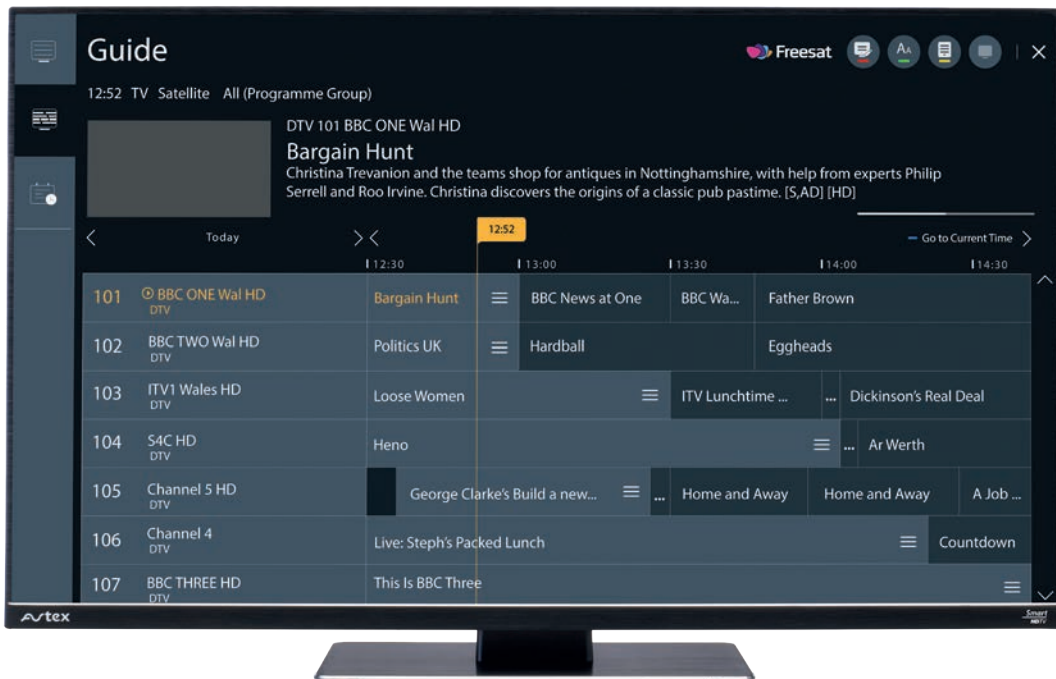


Wirelessly connect via Bluetooth

Our smart TV Range offer Bluetooth in and out which means you can listen to your TV with Bluetooth headphones or connect wirelessly to your Avtex soundbar or even listen to music using your TV speakers from your paired Bluetooth device.



Avtex smart TVs have Freesat on board! Not to be confused with free to air satellite. Freesat is a satellite TV platform providing subscription free TV with a full 7 day electronic programme guide and automatic channel sorting.



W195TS

19.5" Smart HD TV



The most compact Smart TV in the Avtex range, the Avtex W195TS provides all the benefits of a fully smart television with the external dimensions to fit the smallest of spaces. The W195TS is a fully loaded 12/24V DC / 240V Smart television, it is filled with exciting features and content. With internet connection you can discover a whole new world of entertainment from premium streaming services such as Netflix, Amazon Prime, Disney+, iPlayer, Now TV, Sky Store, YouTube and much more. Bluetooth connection to the SB195BT to again utilise any small space to provide a fully adaptable environment.

Wirelessly cast from your mobile device to the W195TS, compatible with both Apple(iOS) and Android devices, gives you the ability to share photos, movies and musical content.

Watch Full HD through your regular aerial or satellite dish without the need for extra equipment and now with integrated Freesat enjoy a full 7 day programme guide on both terrestrial and satellite platforms.

19.5" SMART HD TV

KEY FEATURES

- 19.5" Full HD Smart TV with built-in HD satellite decoder
- Built-in FreeSat Satellite decoder with 7 day EPG
- DVB-T & DVB-T2 digital tuner
- DVB-S & DVB-S2 digital HD freesat satellite tuner
- Ultra compact edge-to-edge design
- Bluetooth connectivity
- Wi-Fi built-in 2.4 & 5Ghz
- Timer record from programme guide (EPG)
- Pause/playback live TV/Instant record to external HDD
- Voice control (optional with magic remote)
- 240v AC / 12v/24v DC

*Some services may require subscription (sold separately)

W448 x H257 x D46mm
(without stand)

Weight
2.7kg (with stand)

W215TS

21.5" Smart HD TV



The new Avtex fully loaded 12/24V DC/240V Smart W215TS television is bristling with features and content. Connect the W215TS to the internet and discover a whole new world of entertainment from premium streaming services such as Netflix, Amazon Prime, Disney+, iPlayer, Now TV, Sky Store, YouTube and much more. Bluetooth connection to the SB195BT to immerse yourself in deep, rich velvety tones (other Bluetooth enabled devices are compatible).

Want to share photos? Wirelessly cast from your mobile device to the W215TS, compatible with both Apple(iOS) and Android devices.

Watch Full HD through your regular aerial or satellite dish without the need for extra equipment and now with integrated Freesat enjoy a full 7 day programme guide on both terrestrial and satellite platforms.

KEY FEATURES

- 21.5" Full HD Smart TV with built-in HD satellite decoder
- Built-in FreeSat Satellite decoder with 7 day EPG
- DVB-T & DVB-T2 digital tuner
- DVB-S & DVB-S2 digital HD freesat satellite tuner
- Ultra compact edge-to-edge design
- Bluetooth connectivity
- Wi-Fi built-in 2.4 & 5Ghz
- Timer record from programme guide (EPG)
- Pause/playback live TV/Instant record to external HDD
- Voice control (optional with magic remote)
- 240v AC / 12v/24v DC

*Some services may require subscription (sold separately)

W491 x H288 x D46mm Weight
(without stand) 3.1kg (with stand)

21.5" SMART HD TV

W249TS

24" Smart HD TV



All the benefits of a 24" screen but with the external dimensions attributed to a 21" model. The W249TS is a fully loaded 12/24V DC / 240V Smart television, filled with exciting features and content. Connect it to the internet and you can discover a whole new world of entertainment from premium streaming services such as Netflix, Amazon Prime, Disney+, iPlayer, Now TV, Sky Store, YouTube and much more.

Pair via Bluetooth connection to the SB195BT to immerse yourself in deep, rich velvety tones (other Bluetooth enabled devices are compatible). Wirelessly cast from your mobile device to the W249TS, compatible with both Apple (iOS) and Android devices, and share photos, movies and musical content. Watch Full HD content through your regular aerial or satellite dish without the need for extra equipment and now with integrated Freesat enjoy a full 7 day programme guide on both terrestrial and satellite platforms.

KEY FEATURES

- 24" Full HD Smart TV with built-in HD satellite decoder
- Built-in FreeSat Satellite decoder with 7 day EPG
- DVB-T & DVB-T2 digital tuner
- DVB-S & DVB-S2 digital HD freesat satellite tuner
- Ultra compact edge-to-edge design
- Bluetooth connectivity
- Wi-Fi built-in 2.4 & 5Ghz
- Timer record from programme guide (EPG)
- Pause/playback live TV/Instant record to external HDD
- Voice control (optional with magic remote)
- 240v AC / 12v/24v DC

*Some services may require subscription (sold separately)

24" SMART HD TV

W539 x H317 x D47mm
(without stand)

Weight
3.5kg (with stand)

W279TS

27" Smart HD TV



The new 27" Full HD ultra-slim Smart TV, W279TS, with wide viewing angle LED screen has a contemporary compact new design filling the position between the 24" and 32" models.

The W279TS has a certified Freesat decoder so you can watch HD programmes through your aerial or satellite dish and enjoy a 7 day EPG on both platforms without any additional decoders. Ultra-slim, light and compact, our latest model boasts both Wi-Fi and Bluetooth connectivity, ideal to link up to the Avtex Soundbar, SB195BT.

With internet connection you can discover a whole new world of entertainment from premium streaming services such as Netflix, Amazon Prime, Disney+, iPlayer, Now TV, Sky Store, YouTube and much more, you even get the opportunity to share your photos wirelessly from any Android or Apple(iOS) device.

KEY FEATURES

- 27" Full HD Smart TV with built-in HD satellite decoder
- Built in FreeSat Satellite decoder with 7 day EPG
- DVB-T & DVB-T2 digital tuner
- DVB-S & DVB-S2 digital HD freesat satellite tuner
- Ultra compact edge-to-edge design
- Bluetooth connectivity
- Wi-Fi built-in 2.4 & 5Ghz
- Timer record from programme guide (EPG)
- Pause/playback live TV/Instant record to external HDD
- Voice control (optional with magic remote)
- 240v AC / 12v/24v DC

*Some services may require subscription (sold separately)

W620 x H364 x D47mm Weight
(without stand) 4.5kg (with stand)

27" SMART HD TV

W320TS

32" Smart HD TV



The ultimate mobile entertainment system

The new Avtex W320TS fully loaded battery/mains 32" Smart TV is feature packed. Connect your TV to the internet and enjoy entertainment from premium streaming services such as Netflix, Amazon Prime, Now TV, Sky Store, Disney+, You Tube, BBC iPlayer and much more! If you're using the Avtex Mobile Internet Solution (AMR router and antenna) you can even view the system's connectivity status on-screen.

Wirelessly cast photos from your mobile devices to your Avtex Smart TV to share with your friends. Works with both android and iOS (Apple).

The stylish W320TS is the next level in large screen mobile entertainment.

KEY FEATURES

- 32" Full HD Smart TV with built-in HD satellite decoder
 - Built in FreeSat Satellite decoder with 7 day EPG
 - DVB-T & DVB-T2 digital tuner
 - DVB-S & DVB-S2 digital HD freesat satellite tuner
 - Ultra compact edge-to-edge design
 - Bluetooth connectivity
 - Wi-Fi built-in 2.4 & 5Ghz
 - Timer record from programme guide (EPG)
 - Pause/playback live TV/Instant record to external HDD
 - Voice control (optional with magic remote)
 - 240v AC / 12v/24v DC
- *Some services may require subscription (sold separately)

W721 x H422 x D42mm
(without stand)

Weight
5.8kg (with stand)

32" SMART HD TV

Avtex Voice Remote

Optional extra (not included)



VOICE REMOTE

Control your Smart TV with voice commands!

The new Avtex voice remote has Intelligent Voice Recognition technology allowing you to control your TV and use Apps like Amazon Alexa. It also acts as a mouse-like control and click wheel to manage your entertainment and assist when entering text.

Key Features

- Intelligent Voice Recognition
- Netflix and Prime Video Hot Keys
- Intuitive Mouse Like Pointing and Wheel Control
- Universal Remote
- Number Keypad

Disclaimer

*Some services may require subscription (sold separately)

A Smart TV is a platform that can run 3rd party Apps. 3rd party content providers may remove Apps from the Smart TV platform or stop supporting them at any time, and we cannot guarantee an Apps availability. When new Smart TV products are launched, there may also be a delay before certain Apps become available. Availability of Apps is not included within the terms of the manufacturer's warranty

THE PRO SERIES

Watch one programme and record another

- Multi-Channel Watch & Record Technology
- Watch one programme and record another
- Watch a DVD and record a TV programme at the same time
- Timer record from programme guide-pause / playback live TV
- Instant record on Digital or Satellite TV to external USB or HDD

M249DRS-PRO

Built-in DVB-T2/S2 HD digital and satellite decoder



Watch & Record

The M249DRS-PRO LED TV/DVD/MULTI-TUNER PVR combi with built-in twin DVB-T/T2 and DVB-S/S2 tuners allow you to watch TV, DVD or listen to the radio and simultaneously record terrestrial or satellite TV. Experience the versatility of the new PRO range. Ultra-slim, light and compact. Our latest model boasts AQT one button tuning, an on-screen leisure battery meter and many other features you would expect from the leading mobile leisure specific TV.

The all new Avtex DRS-PRO range sets a new standard in mobile portable entertainment. Frameless edge to edge, 24" Full HD Ultra-Wide viewing angle LED screen and gorgeous new lines simply ooze class. The inspired yet practical design has resulted in the M249DRS-PRO having a 24" screen but the dimensions typically attributed to a 21" TV

KEY FEATURES

- Ultra compact edge-to-edge frameless design
- 24" Full HD LED TV-DVD
- Multi-tuner watch and record technology
- Watch one programme and record another
- Watch a DVD and record a TV programme at the same time
- Watch terrestrial TV and record satellite and vice versa
- Timer record from programme guide (EPG)
- Pause/playback live TV/Instant record to USB on both Satellite and TV
- DVB-T & DVB-T2 digital tuner
- DVB-S & DVB-S2 digital satellite tuner
- HD built-in for both terrestrial and satellite channels
- DVD/CD player
- On-screen battery meter
- AQT one button tuning system
- 240v AC / 12v/24v DC

24" WIDESCREEN DIGITAL HD TV/DVD COMBI

W539 x H317 x D47mm
(without stand)

Weight
3.5kg (with stand)

M219DRS-PRO

Built-in DVB-T2/S2 HD digital and satellite decoder



Watch One Channel, Record Another

The M219DRS-PRO 21.5" frameless full HD Ultra-wide viewing angle LED TV/DVD/PVR combi with its sophisticated aesthetic and watch & record technology built-in offers a new level of mobile entertainment. Superior performance and build quality packed with mobile specific features such as AQT one button tuning, an on-screen leisure battery meter and much more!

KEY FEATURES

- Ultra compact edge-to-edge frameless design
- 21.5" Full HD LED TV-DVD
- Multi-tuner watch and record technology
- Watch one programme and record another
- Watch a DVD and record a TV programme at the same time
- Watch terrestrial TV and record satellite and vice versa
- Timer record from programme guide (EPG)
- Pause/playback live TV/Instant record to USB on both Satellite and TV
- DVB-T & DVB-T2 digital tuner
- DVB-S & DVB-S2 digital satellite tuner
- HD built-in for both terrestrial and satellite channels
- DVD/CD player
- On-screen battery meter
- AQT one button tuning system
- 240v AC / 12v/24v DC

W491 x H288 x D46mm
(without stand)

Weight
3.1kg (with stand)

21.5" WIDESCREEN DIGITAL HD TV/DVD COMBI

M199DRS-PRO

Built-in DVB-T2/S2 HD digital and satellite decoder



The ultra-compact contemporary edge-to-edge design of the M199DRS-PRO is dramatically reduced in physical size when compared to most standard models of this size but with absolutely no compromise in performance. The Full HD screen boasts superb viewing angles is packed with features such as multi DVBT-T2/DVBS-S2 tuners allowing you to watch one programme whilst recording another. Even watch a DVD and record TV, view HD programmes through a standard aerial or satellite dish without the need for further decoders. AQT one button tuning system for very simple set up. Ideal for touring.

KEY FEATURES

- Ultra compact edge-to-edge frameless design
- 19" Full HD LED TV-DVD
- Multi-tuner watch and record technology
- Watch one programme and record another
- Watch a DVD and record a TV programme at the same time
- Watch terrestrial TV and record satellite and vice versa
- Timer record from programme guide (EPG)
- Pause/playback live TV/Instant record to USB on both Satellite and TV
- DVB-T & DVB-T2 digital tuner
- DVB-S & DVB-S2 digital satellite tuner
- HD built-in for both terrestrial and satellite channels
- DVD/CD player
- On-screen battery meter
- AQT one button tuning system
- 240v AC / 12v/24v DC

19" WIDESCREEN DIGITAL HD TV/DVD COMBI

W448 x H257 x D46mm
(without stand)

Weight
2.7kg (with stand)

Full HD TV

Astex®

L320TRS

Built-in DVB-T2/S2 HD digital and satellite decoder



The luxury of large screen viewing made practical

The Full HD L320TRS makes the luxury of large screen viewing practical even to people on the move thanks to its ultra-compact stylish design. Operating from either mains (240v AC) or battery (12-24V DC) and with a DVB-T2 HD tuner and a DVB-S2 HD tuner built-in, the L320TRS allows you the freedom to enjoy HD TV through an aerial or a satellite dish almost anywhere! Packed with features such as Avtex AQT for simple set up and the ability to record or pause live TV to an external memory device. This is large screen mobile TV at its best.

KEY FEATURES

- 32" Full HD Panel 1920 x 1080
- DVB-T & DVB-T2 digital tuner
- DVB-S & DVB-S2 digital satellite tuner
- HD built-in for both terrestrial and satellite channels
- AQT one button tuning system
- On-screen battery meter
- Low battery indicator
- Pause/playback live TV/Instant record to USB on both Satellite and TV
- Timer record from programme guide (EPG)
- CI socket for access for pay TVs
- 240v AC / 12v/24v DC

32" WIDESCREEN DIGITAL HD TV/DVD COMBI

W721 x H422 x D42mm
(without stand)

Weight
5.8kg (with stand)

40DSFVP

DVB-T2/S2 HD digital and satellite decoder



Avtex 39" Connected TV

is the ultimate Full HD large screen 12V television perfect for those people who want the luxury of large screen entertainment in their mobile vehicle. Complete with all the features of the Avtex Connected series this stylish sophisticated 39" operates from both mains and battery and is ideal for both your recreational vehicle and the home Avtex connected TVs, a new standard in mobile entertainment.

KEY FEATURES

- 39" Full HD connected TV with built-in HD satellite decoder
- DVB-T & DVB-T2 digital tuner
- DVB-S & DVB-S2 digital HD satellite tuner
- Wi-Fi built-in for connected services and extra channels
- Freeview HD
- 7 day programme guide
- AQT one button tuning system (Ideal for touring)
- On-screen battery meter
- Ultra compact edge-to-edge design
- CI socket for access for pay TVs
- 240v AC / 12v/24v DC
- 2xHDMI/2xUSB/phono/headphone/audio in/optical audio-out

W881 x H511 x D41mm
(without stand)

Weight
9kg (with stand)

39" WIDESCREEN DIGITAL HD TV/DVD COMBI

Specifications

	Smart TV Series				
Model	W195TS	W215TS	W249TS	W279TS	W320TS
Screen size	19.5"	21.5"	24"	27"	32"
Widescreen Format	•	•	•	•	•
LED display	•	•	•	•	•
Full HD Display resolution	1920 x 1080	1920 x 1080	1920 x 1080	1920 x 1080	1920 x 1080
Viewing angle H / V	178 / 178	178 / 178	178 / 178	178 / 178	178 / 178
DVBS-S2 HD Satellite decoder	•	•	•	•	•
DVBT-T2 HD through aerial	•	•	•	•	•
freesat with EPG	•	•	•	•	•
Free to air satellite	•	•	•	•	•
WiFi connected	•	•	•	•	•
Bluetooth	•	•	•	•	•
Fast scan	•	•	•	•	•
Smart services Netflix etc..	•	•	•	•	•
Ethernet connected	•	•	•	•	•
Magic Remote with voice control (optional Extra)	•	•	•	•	•
DVD					
CD					
AQT					
CI Slot	•	•	•	•	•
Multi Channel Watch & Record					
Pause / Playback	•	•	•	•	•
Instant record to USB					
Instant record to HDD	•	•	•	•	•
Timer record from programme guide (EPG)	•	•	•	•	•
HDMI	x2	x2	x2	x2	x2
HDMI ARC	•	•	•	•	•
Coaxial Audio Output					
Optical Audio Output	•	•	•	•	•
USB	x2	x2	x2	x2	x2
Headphone socket	•	•	•	•	•
Mini AV input	•	•	•	•	•
RCA input					
Wall mounted VESA 100mm x 100mm	•	•	•	•	•
On / Off switch	•	•	•	•	•
240v operation	•	•	•	•	•
12v operation	•	•	•	•	•
24v operation	•	•	•	•	•
Weight (with stand)	2.7 kg	3.1 kg	3.5 kg	4.5 kg	5.8 kg
Dimensions (w / h / d) mm (without stand)	448 x 257 x 46	491 x 288 x 46	539 x 317 x 47	620 x 364 x 47	721 x 422 x 42
Dimensions (w / h / d) mm (with stand)	448 x 278 x 46	491 x 308 x 46	539 x 350 x 47	620 x 414 x 47	721 x 472 x 42
Remote control / power / cables / instructions	•	•	•	•	•
Finish	Black	Black	Black	Black	Black

	PRO Series			Full HD TV	
Model	M249DRS-PRO	M219DRS-PRO	M199DRS-PRO	40DSFVP	L320TRS
Screen size	24"	21.5"	19.5"	39"	32"
Widescreen Format	•	•	•	•	•
LED display	•	•	•	•	•
Full HD Display resolution	1920 x 1080	1920 x 1080	1920 x 1080	1920 x 1080	1920 x 1080
Viewing angle H / V	178 / 178	178 / 178	176 / 176	178 / 178	178 / 178
DVB-S2 HD Satellite decoder	•	•	•	•	•
DVB-T2 HD through aerial	•	•	•	•	•
freesat with EPG					
Free to air satellite	•	•	•	•	•
WiFi connected				•	
Bluetooth					
Freeview Play with reverse EPG				•	
SVOD services Netflix etc..					
Ethernet connected				•	
Magic Remote with voice control (optional Extra)					
DVD	•	•	•		
CD	•	•	•		
AQT	•	•	•	•	•
CI Slot	•	•	•	•	•
Multi Channel Watch & Record	•	•	•		
Pause / Playback	•	•	•		•
Instant record to USB	•	•	•		•
Instant record to HDD	•	•	•		•
Timer record from programme guide (EPG)	•	•	•		•
HDMI	x2	x2	x2	x2	x2
HDMI ARC	•	•	•	•	•
Coaxial Audio Output	•	•	•		•
Optical Audio Output				•	
USB	x2	x2	x2	x2	x2
Headphone socket	•	•	•	•	•
Mini AV input	•	•	•	•	•
RCA input					
Wall mounted VESA 100mm x 100mm	•	•	•	•	•
On / Off switch	•	•	•	•	•
240v operation	•	•	•	•	•
12v operation	•	•	•	•	•
24v operation	•	•	•	•	•
Weight (with stand)	3.5 kg	3.1 kg	2.7 kg	9kg	5.8 kg
Dimensions (w / h / d) mm (without stand)	539 x 317 x 47	491 x 288 x 46	448 x 257 x 46	881 x 511 x 41	721 x 422 x 42
Dimensions (w / h / d) mm (with stand)	539 x 334 x 47	491 x 308 x 46	448 x 278 x 46	881 x 591 x 41	721 x 472 x 42
Remote control / power / cables / instructions	•	•	•	•	•
Finish	Black	Black	Black	Black	Black

AUDIO

stex

Immerse yourself

THE COMPLETE SOLUTION

All-In-One TV Sound-Bar & Bluetooth Speaker System

SB195BT SOUND-BAR

The SB195BT comes complete with a bracket so it can be attached to the latest Avtex TVs for wall mounting. Simply remove the TV stand (as it is not required when wall mounting) and use the same two holes that the stand uses to attach the bracket and Sound-Bar. Simple. For other makes of TV or older Avtex models consult your retailer regarding a mounting solution.



KEY FEATURES

- Bluetooth wireless music streaming
- Ultra-compact design
- Four speaker driver system
- Superior tonal range for crisp, clear sound
- Simple set-up
- USB Playback
- HDMI Arc
- Coaxial audio in
- Aux in
- EQ settings
- 240v AC / 12v/24v DC
- Power Output: 2 x 10W
- Power Consumption: 12v - 0.75A / 24v - 0.42A

W436 x H46 x D68mm
(without stand)

Weight
1.2kg

SB195BT SOUND-BAR

Satellite Navigation

Navigation for Caravans & Motorhomes following a collaboration between Avtex and satellite navigation leaders Garmin a range of caravan and motorhome satellite navigation products are now available.

An aerial, long-exposure photograph of a winding asphalt road at night. The road curves through a lush, green, hilly landscape. The headlights and taillights of vehicles have created bright, glowing light trails that follow the path of the road. The surrounding hills are covered in grass and some trees, and the overall scene is illuminated by the ambient light of dusk or dawn.

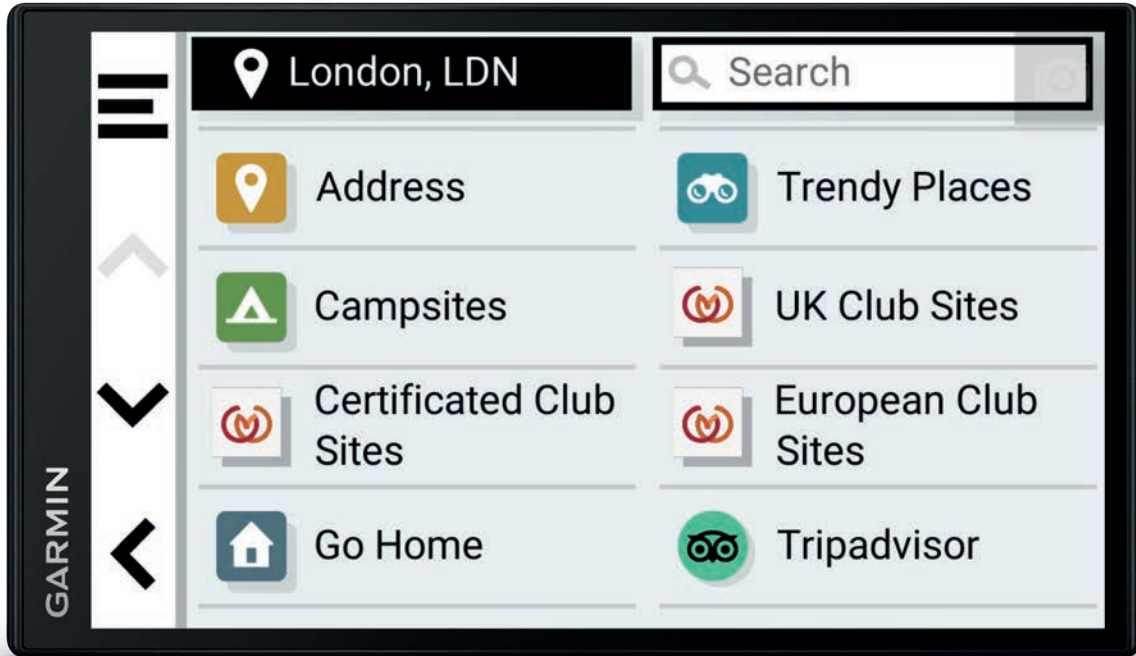
astex[®]

Designed for your
Mobile Life

 **CARAVAN AND
MOTORHOME CLUB[®]**
SINCE 1907

Tourer Three

Navigation for Caravans and Motorhomes



The new Avtex Tourer Three

comes packed with features specifically for use with caravans and motorhomes. Simply enter the size and weight of your motorhome or towing outfit and the Avtex Tourer Three will guide you to your destination avoiding height, width, and weight restricted roads whilst providing you with route warnings such as sharp bends or steep hills along the way. The Avtex Tourer Three will even suggest places you might want to visit en-route and will also inform you of traffic jams and offer alternate routes when available. Once you arrive at your destination you can use BirdsEye imagery to assist you to navigate right to your pitch!

The Avtex Tourer range provides exclusive access to the Caravan and Motorhome Club campsite database allowing you to accurately search, filter and view all the Club campsites. In addition to the Club campsites locations, the full ACSI, Trailer's Park, Campercontact and Michelin® Green Guide databases are pre-loaded to name but a few, this comprehensive listing of campgrounds contains thousands of sites in the UK and Europe with Tripadvisor® ratings!

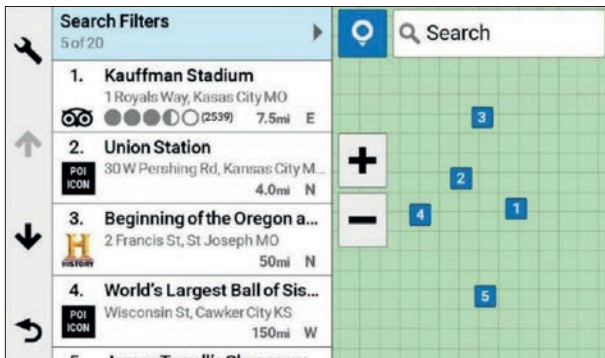
The Avtex Tourer Three can be easily kept up to date for all your journeys with FREE map updates for UK and Europe included.



SATELLITE NAVIGATION

KEY FEATURES

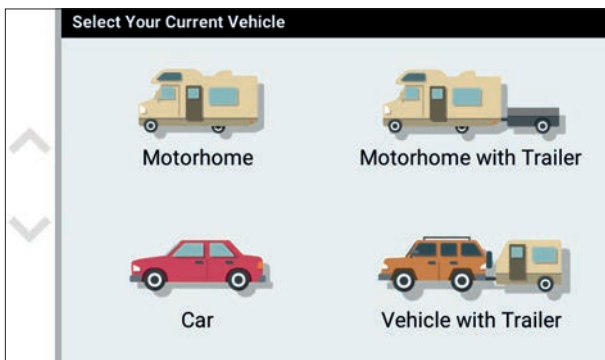
- 6.95" (17.7cm) HD Display guides you to your destination with a pinch-to-zoom, capacitive glass display
- Caravan and Motorhome Vehicle Profile shows speed limits, height restrictions and driver alerts
- New Easily plan arrival to your desired destination using BirdsEye Satellite Imagery to show you where to go
- New Trendy Places, Local Spots and Scenic Routing features help inform you of places that are worth a visit
- New Environmental Zone routing
- Exclusive Caravan and Motorhome Club campsite database
- Extensive European Caravan and Motorhome site databases
- Map updates included via PC, Mac, or WiFi®
- Road Warnings, Elevation Profile and Driver Alerts
- Hands-free features include Bluetooth® calling, smart notifications and voice-activated navigation
- Road trip-ready with Tripadvisor® Traveller Ratings and points of interest (POIs)
- Wireless Backup Camera compatible (not included)



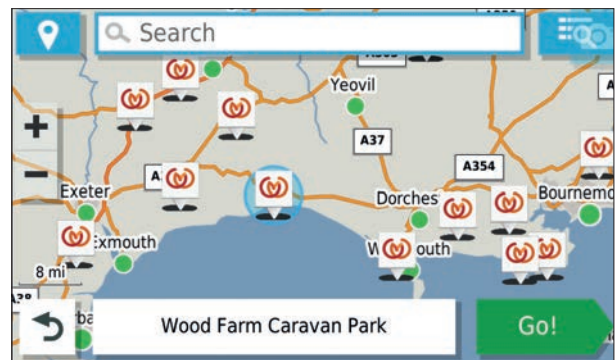
Trendy Places Locator



BirdsEye Satellite Imagery



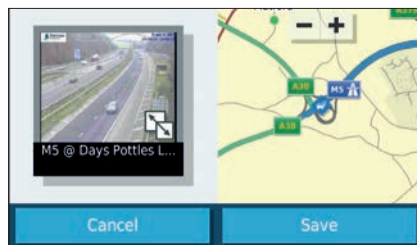
Caravan and Motorhome Profile



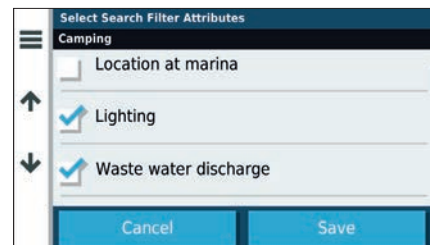
The Caravan and Motorhome Club Directory



Free Map Updates



Live Traffic (DAB or smartphone)



Filter sites by amenities

W170 x H99 x D14mm
(without stand) Weight
251g

*Some services may require subscription (sold separately)

Tourer Three PLUS

Navigation for Caravans and Motorhomes



Featuring a 7-inch colour TFT touchscreen, built-in 1080p HD dash cam and exclusive access to the caravan club campsite data the new Avtex Tourer Three PLUS is perfect for use with caravans and motorhomes.

Simply enter your vehicles size and weight and the Avtex Tourer Three PLUS will guide you to your destination avoiding height, width, and weight restricted roads whilst providing you with route warnings such as sharp bends or steep hills along the way. In case of an accident the Avtex Tourer Three PLUS will continuously record and save videos of detected incidents throughout your journey. Upon your arrival BirdsEye Satellite Imagery makes arrival planning easy with aerial photographs of the motorhome park or campsite, assisting you right to your pitch!

The Avtex Tourer range provides exclusive access to the Caravan and Motorhome Club campsite database allowing you to accurately search, filter and view all the Club campsites. In addition to the Club campsites locations, the full ACSI, Trailer's Park, Campercontact and Michelin® Green Guide databases are pre-loaded to name but a few, this comprehensive listing of campgrounds contains thousands of sites in the UK and Europe with Tripadvisor® ratings!

The Avtex Tourer Three PLUS can be easily kept up to date for all your journeys with FREE map updates for UK and Europe included.

SATELLITE NAVIGATION





Integrated 1080p
dash camera

Built-in 1080p HD dash cam

The Avtex Tourer Three Plus includes a dash cam for recording events in the road ahead. The built-in dash cam records at 1080p HD and up to 30FPS (Frames Per Second) with a 140 degrees (diagonal) field of view. Optional GPS overlay records GPS location, speed, date and time. This is useful information as it provides recorded evidence of where and when an incident occurred. Furthermore, incident detection (G-sensor) automatically saves footage on impact. You can also manually save footage with touch of a button.



KEY FEATURES

- 6.95" (17.7cm) HD Display guides you to your destination with a pinch-to-zoom, capacitive glass display
- Built-in 1080p HD dash cam
- Caravan and Motorhome Vehicle Profile shows speed limits, height restrictions and driver alerts
- New Easily plan arrival to your desired destination using BirdsEye Satellite Imagery to show you where to go
- New Trendy Places, Local Spots and Scenic Routing features help inform you of places that are worth checking out
- New Environmental Zone routing
- Exclusive Caravan and Motorhome Club campsite database
- Extensive European Caravan and Motorhome site databases
- Map updates included via PC, Mac, or WiFi®
- Road Warnings, Elevation Profile and Driver Alerts
- Hands-free features include Bluetooth® calling, smart notifications and voice-activated navigation
- Road trip-ready with Tripadvisor® Traveller Ratings and points of interest (POIs)
- 16GB microSD card
- Simple Mount Solution (non-powered/non-magnetic)
- Integrated Driving Recorder Interface (Save/Take Pictures)
- Garmin Vault Video Cloud Storage
- On Device Video Gallery for reviewing and managing footage
- Driver Alerts: Forward Collisions and Lane Departures
- Wireless Backup Camera compatible (not included)

W175 x H105 x D35mm Weight
(without stand) 251g

*Some services may require subscription (sold separately)

Reversing Cameras

For added visual awareness Avtex has teamed with Garmin to offer a range of wireless reversing cameras. All cameras offer a wide and clear video image of the rear of your vehicle, making reversing your caravan or motorhome easier and safer.

Simply put your car into reverse and a display screen on your Tourer SatNav will show a wide field of view of what is behind your vehicle. The rugged weather-resistant design of all cameras can withstand rain, snow, and harsh road conditions, this teamed with the ability to wirelessly connect to your SatNav with a distance of up to 50 feet (15 meters) makes these cameras perfect for the mobile leisure industry.



BC40

Wireless Reversing Camera



The BC40 compatible with Avtex Tourer One and Tourer Two sat-nav

- Truly wireless backup camera uses 2 AA batteries (lithium recommended)
- Flexible screw-mounting solution for the rear of your vehicle
- Displays the BC40 camera view on your compatible sat-nav display
- Provides a wide, clear video image of what's behind your vehicle
- Rugged and weatherproof (water-rated to IPX7) to withstand various road conditions
- Voice commands can initiate the camera view when paired to a compatible sat-nav

No wiring,

We eliminated the hassle of wiring this camera into your car's power supply. Just install 2 AA batteries (lithium recommended), and BC 40 is ready to go.

REVERSING CAMERA

BC50

Wireless Reversing Camera

Reverse with confidence with the BC50, even when manoeuvring a long motorhome or towing a caravan. With HD resolution and a wide 160-degree field of view, this camera helps you see clearly what's behind your vehicle. Whether you're backing a trailer down the boat ramp, parking your camper in that tight spot or reversing your caravan into a pitch, the long 15m transmission range lets you see exactly where you're going from your compatible sat nav. With a software update, Garmin BC50 is compatible with a variety of navigation devices to help drivers of all vehicle types reverse with confidence, including the Avtex Tourer Three and Tourer Three Plus sat navs, as well as Garmin Drive Smart sat navs and Garmin Tread rugged all-terrain sat navs. The rugged weather-resistant design can withstand rain, snow and harsh road conditions.

- Up to 720p sharp HD resolution
- 160 degrees field of view
- Up to 50 feet (15m) wireless transmission distance
- 12v24 Vold DC power source
- Rugged and compact design
- IPX7 weather-resistant housing
- Ability to connect the camera to your vehicle's reverse lights (professional installation recommended).



W25 x H21.8 x D17 MM Weight
(Camera Only) 37.4g (Camera Only)

BC50IR

Wireless Reversing Camera with night vision

Reverse with confidence, even when manoeuvring longer vehicles or a caravan. NightGlo technology illuminates what matters behind your vehicle for exceptional visibility in dark settings. Whether you're parking your motorhome in that perfect space or reversing your camper on to your driveway, the HD resolution and a wide field of view helps you clearly see what's behind your vehicle. It provides a long 15m transmission range and pairs wirelessly with your compatible Avtex sat nav. With a software update, Garmin BC50IR is compatible with a variety of navigation devices to help drivers of all vehicle types reverse with confidence, including Garmin, Camper sat navs, DriveSmart sat navs and Garmin Tread rugged all-terrain sat navs. The rugged weather-resistant design can withstand rain, snow and harsh road conditions.

- Exterior Night vision
- Up to 720p sharp HD resolution
- 160 degrees field of view
- Up to 50 feet (15m) wireless transmission distance
- 12v24 Volt DC power source
- Rugged and compact design
- IPX7 weather-resistant housing
- Ability to connect the camera to your vehicle's reverse lights (professional installation recommended).



W25 x H21.8 x D17 MM Weight
(Camera Only) 37.4g (Camera Only)

REVERSING CAMERA

Tourer Range

Specifications

Model	Tourer Three	Tourer Three Plus
Screen size	6.95"	6.95"
BirdsEye Satellite Imagery	•	•
Trendy Places Locator	•	•
Environmental Zone Routing	•	•
Vehicle Profiling	•	•
Caravan and Motorhome Club Data Base	•	•
European Caravan and Motorhome Sire Data Base	•	•
Map Updates	•	•
Digital Traffic	•	•
Road Warnings	•	•
Elevation Profile	•	•
Driver Alerts	•	•
Bluetooth® Calling	•	•
Smart Notifications	•	•
Voice Activated Navigation	•	•
TripAdvisor® Traveller Ratings	•	•
Foursquare® Points of Interest	•	•
Michelin Green Guide	•	•
Wireless Backup Camera Compatible (Not Included)	•	•
Integrated 1080p dash cam based on Dash Cam Mini 2		•
16GB microSD card		•
Simple Mount Solution (non-powered/non-magnetic)		•
Integrated Driving Recorder Interface (Save/Take pictures)		•
Garmin Vault Video Cloud Storage		•
On-device Video Gallery for reviewing and managing footage		•
Driver Alerts: Forward Collisions and Lane Departure		•

*Some services may require subscription (sold separately)



Mobile Internet Solutions

STREAM BROWSE SHARE



AMR985

4G/5G Antenna
Mobile Internet Solution
Dual Sim Router



STREAM BROWSE SHARE

Stream Browse Share with the Avtex AMR985 router and 5G compatible antenna package. The antenna utilises the latest technology to fully support 3G, 4G and 5G, whilst the AMR985 router supports two unlocked SIM cards to maximise coverage and minimise roaming costs. Connect up to 100 devices with download speeds of 150Mbps, 4x ethernet ports for wired connection and also including a simplified customer on screen display to easily toggle between LTE and Wi-Fi when available.

KEY FEATURES

Antenna

- 3G/4G/5G compatible antenna
- Low profile omni directional MiMo antenna
- High Gain
- Works in motion or stationary



Router

- 4G LTE Catt 4 with speeds up to 150 Mbps
- Wireless Access Point with Hotspot functionality
- Dual SIM ensures coverage and reduces roaming cost
- Connect to existing WIFI network to reduce data cost
- WAN failover - automatic switch to available back-up connection
- 4 x Ethernet ports
- Remote management System Support
- 12V / 24V / mains operation
- E-mark certified for automotive installations

MOBILE INTERNET SOLUTION

NEW AMR995X

5G Mobile Internet Solution

Dual Sim Router

Stream Browse Share with the brand new Avtex AMR995X 5G router and 5G compatible antenna package. The antenna utilises the latest technology to fully support 3G, 4G and 5G, whilst the AMR995X router supports two unlocked SIM cards to maximise coverage and minimise roaming costs.

Connect up to 100 devices, 4x ethernet ports for wired connection and also including a simplified customer on user interface to easily toggle between LTE and Wi-Fi when available.



KEY FEATURES

Antenna

- High Gain
- 3G/4G/5G compatible antenna
- Low profile omni directional MiMo antenna
- Works in motion or stationary

Router

- Global 5G/4G/3G cellular connections
- LTE / WIFI Toggle
- Security : WPA, WPA2, WEP
- Operates on both 5Ghz and 2.4Ghz
- 4 LAN Ports
- Fast reliable internet access suitable for Streaming & Browsing
- Dual SIM ensures coverage and reduces roaming cost
- Connect to existing Wi-Fi network to reduce data cost
- Connect 100 devices simultaneously
- WAN failover - automatic switch to available backup connection
- Wireless Access Point with Hotspot functionality
- 12V / 24V / mains operation
- E-mark certified for automotive installations



MOBILE INTERNET SOLUTION

Protective Carry Cases & Accessories

The logo for Artex, featuring the word "Artex" in a stylized, blue, lowercase font. The letters are slightly shadowed, giving the logo a three-dimensional appearance as if it's a metallic or embossed badge.

Artex

TV CARRY CASES

16", 18.5", 19.5", 21.5" & 24" Carry cases



Specifically designed to carry and protect the 16", 18.5", 19.5" and 21.5" and 24" LED TV / DVD combinations in the range. They have separate compartments to house all of the accessories and leads that accompany the screens and room for the Avtex (SB195BT) Sound-Bar also.

SAT NAV CARRY CASE

AV770BG SAT NAV Carry case

A high quality carry case specifically made to carry and protect the Avtex 660 Camper Premium, Tourer One, Tourer One Plus and Tourer Two Sat Navs.

Specifications

- Suitable for Avtex Tourer One
- Suitable for Avtex Tourer One Plus
- Suitable for Avtex 660 Camper Premium
- Suitable for Avtex Tourer Two
- Suitable for Avtex Tourer Three
- Suitable for Avtex Tourer Three Plus
- Tough, durable, hard outer shell
- Additional compartment for car charger
- Internal padding for extra protection



CARRY CASES

STH4000

STH4000 boosted antenna with LTE filtering

The STH4000 boosted antenna with LTE filtering is designed specifically for use with digital televisions. It is light weight, compact and very easy to use. With its unique flexible mounting system it can be installed indoors or outdoors in seconds. The integrated amplifier can be powered by the antenna power out function found on most set top boxes and all Avtex digital televisions.



ANPS104

Antenna

The Avtex ANPS104 is the perfect solution for low signal strength areas or for boosting the signal to up to four separate TV locations. The Avtex ANPS104 amplifier operates on 12v DC designed for use in caravans or motorhomes.

Key Features

- Low noise amplifier technology
- 1 input and 4 outputs
- High 12 dB Gain
- 12v DC power – lead supplied
- LED AMPLIFIER power on indicator

AMPLIFIER

MOUNTING SOLUTIONS

In today's style conscious world many of our decisions are design led. So when choosing a flat panel TV wall mount a well designed, space saving solution is very important. Our new range of quick release mounting solutions are very simple yet highly functional. Most brackets can swivel and tilt (amounts vary by model, please see specifications below) and incorporate a quick release function allowing you to mount and remove your television from the bracket quickly and easily. A great feature for security and for those on the move.

SV5

Flat To Wall Mounting Solution



The SV5 Quick Release Wall Mount is a secure mounting point for your flat screen television. The mount includes fittings to mount screens with 50 x 50mm, 75 x 75mm or 100 x 100mm VESA mount points, and supports 10" to 24" screens up to 25Kgs.

SPECIFICATION

- Max support: 25kg
- Screen size: 10"-24" (25.5cm – 70cm)
- Quick release feature
- VESA Compatible: 50/75/100mm
- In silver

AK12TM

Lockable Aluminium full-motion RV TV mount



The AK12TM is a high quality VESA mounting solution made of light-weight aluminium, designed specifically for the mobile leisure industry. The AK12TM has a simple but clever locking system which allows you to secure the bracket in an instant ready for when you are on the move! The double arm and tilt action provide maximum flexibility giving you the opportunity to adjust the viewing angle of your TV to its optimum.

SPECIFICATION

- Lockable aluminium full-motion RV TV mount
- Max support 15kg
- Screen size 10"-32"
- Swivel +/-90
- Tilt +/- 55-45
- Detachable VESA plate design
- Stepped joints prevents in-transit vibration
- Lockable design resists arm-shaking and noise
- Free-tilting and swiveling for multiple viewing angles
- Cable management system
- In Silver

AK85TM

In Motion Single Arm Mounting Solution



The AK85TM is a high quality VESA mounting solution made of lightweight aluminium, designed specifically for the mobile leisure industry.

The single arm and tilt action provide maximum flexibility giving you the opportunity to adjust the viewing angle of your TV to its optimum. The convenient quick release design also allows you to remove your TV in seconds and relocate it for maximum security.

AK86TM

In Motion Double Arm Mounting Solution



The AK86TM is a high quality VESA mounting solution made of lightweight aluminium, designed specifically for the mobile leisure industry. The AK86TM has a simple but clever locking system which allows you to secure the bracket in an instant, ready for when you are on the move! The double arm and tilt action provide maximum flexibility giving you the opportunity to adjust the viewing angle of your TV to its optimum. The convenient quick release design also allows you to remove your TV in seconds and relocate it for maximum security.

AK87TM

In Motion Triple Arm Mounting Solution



The AK87TM is a high quality VESA mounting solution made of lightweight aluminium, designed specifically for the mobile leisure industry. The AK87TM has a simple but clever locking system which allows you to secure the bracket in an instant, ready for when you are on the move! The triple arm and tilt action provide maximum flexibility giving you the opportunity to adjust the viewing angle of your TV to its optimum. The convenient quick release design also allows you to remove your TV in seconds and relocate it for maximum security.

astex[®]
CATALOGUE23

Television | Audio | Navigation | Wi-Fi



Designed for your
Mobile Life



avtex[®]
CATALOGUE**23**

Avtex Ltd

Calon Point, No.1 Fountain Lane, St. Mellons Business Park, Cardiff, CF3 0FE UK

avtex.co.uk